

Colton Joint Unified School District

Commitment to Equal Opportunity



Minutes December 15, 2021

The Measure G Citizens' Bond Oversight Committee met on Wednesday, December 15, 2021 at 5:32 p.m. at the Board Room, 18829 Orange Street, Bloomington, CA 92316.

CALL TO ORDER

I. Members Present (*absent)

Mr. Richard Banasiak

Ms. Angela McClain*

Mr. Larry Burgos*

Ms. Regina Neri*

Mrs. Patricia Chavez, Vice Chair

Mr. Henry Michael Razo

Mr. Gary Grossich, Chair

Ms. Amanda Salazar

Staff Members Present

Mr. Owen Chang, Director of Facilities & Energy Management

Ms. Katie Orloff, Director of Communications

Ms. Kasey Kubota, Executive Assistant, Business Services

II. APPROVAL OF MINUTES

September 27, 2021 meeting minutes were reviewed and approved, motion by Mr. Banasiak and seconded by Mrs. Chavez, and carried on a 5-0 vote. A roll call vote was conducted. No opposition.

III. PUBLIC COMMENT

None.

IV. OLD BUSINESS

None.

V. NEW BUSINESS

Professional Learning Center/Board Room at 900 East Washington

Director Chang presented the architect's renderings for the first floor of the 900 East Washington building. The primary purpose of the space will be for training and staff development with board room as secondary use. Plans were submitted

to the City of Colton and Division of the State Architect (DSA) for approval. The district anticipates approval in February or March, but COVID-19 may delay and extend the approval process. After approval, the project will be bid, and it is anticipated that the project will be completed in January 2023. The 850 and 900 East Washington buildings were purchased to consolidate and centralize administration offices.

Mrs. Chavez asked if Colton Middle School will utilize the current district office space once staff from the district office moves to 850 and 900 East Washington. Director Chang stated the district is looking at various options to repurpose district office space.

Bloomington High School Parking Lot Expansion Project

The Bloomington High School Parking Lot Expansion Project is located at the northwest corner of the campus. The project commenced in October, and the first phase of the project is substantially complete. Phase 2 of the project will be completed during winter break.

Bloomington High School AV/Lighting/Rigging Project

Construction for the Bloomington High School AV/Lighting/Rigging Project began on December 6, 2021. The project includes replacement of lighting, A/V equipment and rigging. The duration of the project is 210 calendar days.

Colton High School Multi-Purpose Room

After a 6-month delay, the light fixtures have arrived and are being installed. The installation should be completed by the end of December, followed by the final health department inspection scheduled for the beginning of January.

Colton High School CTE Building

The kitchen portion of the existing cafeteria building at Colton High School will be removed and replaced with a state-of-the-art teaching facility for the culinary arts program. The existing dining area will remain and be renovated. The district received a little less than \$3M in state match funds. The district is having discussions to see if it is possible to include students from the other high schools in the district into the culinary arts program at Colton High School.

Terrace Hills Middle School New Classroom Building

The Lewis Homes and Roquet Ranch developments will impact the district by generating additional enrollment at Terrace Hills Middle School, Wilson Elementary, and Grand Terrace Elementary School. Developer fees and bond funds will be used to provide facilities that align with the district's long term goals. The district will be conducting community meetings in February to solicit design input from the community in order to provide a collaborative and collective solution.

Wilson Elementary School New Classroom Building and Parking

A portion of the open grass area at Wilson Elementary School may be transformed into parking for staff and parents. The community meeting for the addition of the classroom building and parking will be scheduled for approximately 2 weeks after the Terrace Hills Middle School meeting.

Colton High School Rigging/Seating Replacement

Plans for the Colton High School Rigging and Seating Replacement Project have been approved by DSA. Staff is currently working with the site administrators to schedule the work so construction does not conflict with school events such as the Terrace View Elementary School's annual play.

Crestmore Elementary School ADA Curb Appeal/Playground

The district is expecting DSA approval for the Crestmore Elementary School ADA Curb Appeal/Playground Project before the end of this year. The playground portion of the project will be completed first, and then the ADA curb appeal portion of the project will commence during the summer break.

VI. FINANCIAL REPORT

The total budget for the Bloomington High School Parking Expansion Project increased. The Measure B and G annual audit will begin in January.

VII. MEMBER COMMENTS

None.

VIII. NEXT MEETING

Ms. Kubota will contact the committee to schedule a meeting.

IX. ADJOURNMENT

There being no further business, the Measure G Citizens' Bond Oversight Committee meeting was adjourned at 6:17 p.m.



Consolidated Budget Status Report

Budgets versus Commitments and Expenditures for multiple Projects

Budget vs. Commitments and Expenditures

		Budget	Commitments		Expenditures		Measure G Expenditures
Project Name		Total Budget	Total Commitments	Remaining Against Budget	Total Expenditures	Remaining Against Budget	Measure G Expenditures
Admin G	Administrative Control - Program Costs for Measure G ₁	8,000,000	5,904,911	2,095,089	5,876,447	2,123,553	5,846,952
ACTIVE PROJECTS							
AB300	AB300 - AB300	100,000	86,238	13,762	86,238	13,762	45,896
1F	Colton High School - CHS New Math & Science Bldg.	17,871,431	17,637,279	234,153	17,637,279	234,153	3,468,189
1R	Colton High School - CHS Kitchen & Multipurpose Renovation	13,487,440	13,380,995	106,445	13,007,071	480,368	857,742
16-01	Terrace Hills Middle School - Terrace Hills MS Shelter, Parking, DSA Cert	1,650,000	1,604,191	45,809	1,508,392	141,608	447,617
63	Colton Middle School - CMS MPR Modernization _{2, 4}	2,540,500	2,535,732	4,768	2,481,845	58,656	76,196
18-01	Bloomington High School - BHS Parking Lot Expansion ₄	1,100,000	972,512	127,488	459,960	640,040	7,700
20-02	Bloomington High School - BHS Auditorium Audio-Visual & Lighting	1,250,000	152,360	1,097,640	125,269	1,124,732	13,102
20-03	Colton High School - CHS - CTE Culinary Arts	5,870,000	413,600	5,456,400	99,923	5,770,078	82,623
20-04	Colton High School - CHS Auditorium Rigging/AV	1,250,000	65,725	1,184,275	52,888	1,197,112	22,888
20-06	Crestmore ES - Crestmore ES ADA Upgrades	250,000	42,314	207,686	33,164	216,836	33,164
20-07	900 Washington Plaza Board room ₃	750,000	-	750,000	-	750,000	-
21-17	Colton Middle School - MPR HVAC	300,000	-	300,000	-	300,000	-
PLANNED PROJECTS							
61	Birney, Grand Terrace Elem, McKinley, Grimes, Sycamore Hills, CMS, THMS - Fire Alarm/Intercom Upgrades	3,415,000	31,870	3,383,130	31,870	3,383,130	31,870
21-04	Terrace Hills Middle School - New Classrooms/Admin Modernization	12,500,000	-	12,500,000	-	12,500,000	-
21-05	Colton Middle School - New Classrooms/Admin Modernization	12,500,000	-	12,500,000	-	12,500,000	-
21-12	Wilson Elementary - Classroom and Visitor Parking Addition	7,000,000	-	7,000,000	-	7,000,000	-
21-13	Grand Terrace Elementary - Classroom and Parking Addition	6,000,000	-	6,000,000	-	6,000,000	-
21-14	Lewis Elementary - Classroom and Staff Workroom Addition	3,000,000	-	3,000,000	-	3,000,000	-
21-15	Grand Terrace ES, Lewis ES, Ruth Grimes ES - Restroom Bldg Addition	2,400,000	-	2,400,000	-	2,400,000	-
COMPLETED PROJECTS							
1E	Bloomington High School - New Math & Science Bldg.	13,451,813	13,077,930	373,883	13,077,930	373,883	6,120,232
1E	Bloomington High School - Interim Housing	1,569,837	1,472,859	96,978	1,472,859	96,978	1,468,159
1F	Colton High School - Interim Housing	767,228	585,793	181,435	585,793	181,435	585,793
1M	Colton High School - CHS Stadium Renovation & Expansion	15,193,218	13,590,895	1,602,323	13,590,895	1,602,323	7,190,618
1N/62	Bloomington High School - BHS Stadium Renovation & Expansion	13,917,646	13,238,522	679,124	13,238,522	679,123	6,847,019
1Q	Bloomington High School - Multipurpose Renovation	9,490,005	9,490,005	-	9,490,005	-	9,379,355
2A	Crestmore Elementary - Crestmore Modernization	8,606,980	8,464,190	142,790	8,454,720	152,260	8,208,240
2B	D'Arcy Elementary - D'Arcy Modernization	2,120,711	1,365,971	754,740	1,365,971	754,740	1,265
2C	Jurupa Vista Elementary - JV Modernization	2,033,599	1,379,587	654,012	1,379,587	654,011	606
2D	Lewis Elementary - Lewis Modernization	5,017,223	4,555,276	461,947	4,547,289	469,935	4,384,966
2E	Cooley Ranch Elementary - Cooley Ranch Modernization	3,308,182	2,254,960	1,053,222	2,254,960	1,053,222	4,661
2F	Grant Elementary - Grant Modernization	6,596,044	6,422,134	173,910	6,414,367	181,677	6,252,824
2G	Lincoln Elementary - Lincoln Modernization	5,788,679	5,909,694	(121,015)	5,904,915	(116,236)	5,703,337
2H	Reche Canyon Elementary - Reche Canyon Modernization	1,245,925	752,070	493,855	752,070	493,855	31,900
2I	San Salvador - San Salvador Modernization	6,079,687	5,212,588	867,099	5,212,588	867,099	1,329,309
2J	Ruth Harris Middle School - RHMS Modernization	3,058,826	2,148,243	910,583	2,148,243	910,583	8,240
11	Grand Terrace High School - New High School #3	143,988,142	143,732,392	255,750	143,732,392	255,750	17,628,075
27	Joe Baca Middle School - New Middle School #5	49,162,432	43,616,464	5,545,968	43,616,464	5,545,968	24,719,185
35	Jurupa Vista, Reche Canyon, Wilson, BMS - Fire Alarm & Low Voltage Upgrades	2,167,851	1,914,072	253,779	1,914,072	253,779	1,796,037



Consolidated Budget Status Report

Budgets versus Commitments and Expenditures for multiple Projects

Budget vs. Commitments and Expenditures

		Budget	Commitments		Expenditures		Measure G Expenditures
Project Name		Total Budget	Total Commitments	Remaining Against Budget	Total Expenditures	Remaining Against Budget	Measure G Expenditures
37	Colton High School - CHS Pedestrian Bridge Repair	75,062	37,800	37,262	37,800	37,262	37,800
38	Bloomington Middle School - BMS Bldg N Exit Addition	66,152	41,235	24,917	41,235	24,917	41,235
39	D'Arcy Elementary - D'Arcy Fence/Door Improve	59,402	42,813	16,589	42,813	16,589	42,816
40	Jurupa Vista Elementary - Jurupa Drainage Remediation	65,342	19,759	45,583	19,759	45,583	19,759
41	Lewis Elementary - Lewis Basketball Courts/Fence	56,702	37,030	19,672	37,030	19,672	37,030
42	Terrace View Elementary - Terrace View Fire Alarm & Intercom	2,220,500	2,218,099	2,401	2,218,099	2,401	1,913,431
44	Zimmerman Elementary - Zimmerman Fire Alarm & Intercom (4)	5,605,793	4,697,239	908,554	4,694,739	911,054	3,991,780
47	Birney Elementary - Birney Bus Drop/Parking	337,365	312,285	25,080	312,285	25,080	290,692
50	Terrace View Elementary - Terrace View Parking/Shade Shelter	1,311,696	844,731	466,965	844,731	466,965	844,537
53	Bloomington High School - BHS Painting	744,372	743,865	507	743,865	507	175,000
54	Colton High School - CHS Painting	907,584	907,458	126	907,458	126	313,300
64	Washington Alemnative High School - Washington Fire Alarm/Intercom & CRs Add	1,726,300	1,653,661	72,639	1,653,661	72,639	342,707
67	Jurupa Vista Elementary School - Shade Shelter	90,000	12,169	77,831	12,169	77,831	12,374
68	Lewis Elementary School - Shade Shelter	90,000	12,374	77,626	12,374	77,626	12,169
69	Colton High School - Flag Pole at CHS	60,000	31,825	28,175	31,825	28,175	31,825
16-05	CMS Parking Lot	680,000	648,356	31,644	648,356	31,644	214,583
17-05	Colton High School - CHS PA System	558,440	506,804	51,636	506,804	51,636	277,584
18-04	Colton High School - CHS Portable Relocation/Replacement (4)	2,000,000	1,979,250	20,750	1,979,250	20,750	838,272
19-02	Colton High School - CHS Baseball/Softball Field Renovation	3,677,000	3,582,109	94,891	3,569,433	107,567	109,604
19-03	Bloomington High School - BHS Portable Addition	675,000	646,875	28,125	629,036	45,964	204,297
19-04	Ruth Grimes Elementary School - Grimes Portable Addition	825,000	815,141	9,859	811,868	13,132	49,551
Totals		416,630,107	341,802,249	74,827,858	340,308,576	76,321,531	122,394,106

FOOTNOTES

¹ Program Costs for Measure G Includes the following items:

Misc. small project - \$99,316 (as of 06/18/2020)
 LPA Inc. - Facility Master Plan Update - \$298,665 (one time contract)
 AP-Mt. Vernon LLC (rent for Suite 7A) - \$122,220 (thru Sept. 2013)
 Colbi Technologies - \$374,625 (Increased by \$35,000 @ Feb. 6th Board Meeting)
 CJUSD Bond Admin Salaries - \$260,000 per year approx. (Annual salaries @ 20% - 50%)
 Davis Demographics - \$172,085
 Annual Bond audit - \$73,394 (\$8,000 per yr @ 3 yrs)
 NTD Architects (District wide master plan) - \$317,213 (one time contract)
 School Facility Consultants - \$156,080 (\$240,000 total contract, balance divided with project costs above), one time fee
 Spectrum Communication (data cables/phones @ Ste 7A) - \$14,902 (one time fee)
 Seville Construction Services (program management) - \$3,206,766.96 Expended Fees (does not include \$2,194,803.55 project management cost, which is included in above budgets)
 >>Seville Construction: re-negotiated contract as of 09/2011 not to exceed \$3,557,342

² \$150,000 being contributed by Nutritions Services

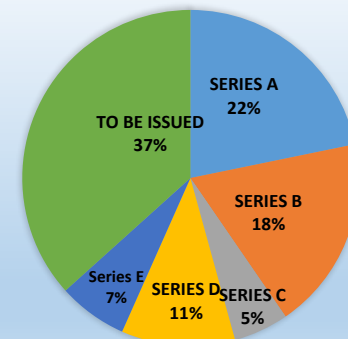
³ Amount reflects commitment from Measure G and not the actual project cost

⁴ Budget increase from non-Measure G sources

Highlights represent changes to Project Phase/Budget from the previous CBOC meeting

Bond Cash Balance 12/07/2021	
Measure B	\$ 54,767
Measure G	\$ -
Series A	\$ 117,227
Series B	\$ 161,186
Series C	\$ -
Series D	\$ 6,494,564
Series E	\$ 14,851,190
Total	\$ 21,678,933

2008 Measure G Bonds



Measure G - \$225,000,000	
Series A	\$48,999,050
Series B	\$41,938,348
Series C	\$11,900,000
Series D	\$24,645,000
Series E	\$14,997,444
Balance to be issued: \$82,520,158	

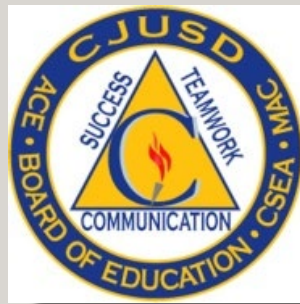


Consolidated Budget Status Report
Budgets versus Commitments and Expenditures for multiple Projects

Budget vs. Commitments and Expenditures

Project Name	Budget	Commitments		Expenditures		Measure G Expenditures
	Total Budget	Total Commitments	Remaining Against Budget	Total Expenditures	Remaining Against Budget	Measure G Expenditures

MEASURE G CBOC UPDATE



December 15, 2021



PROJECT UPDATES



❑ Staff Development Center / Board Room @ 900 Washington Street





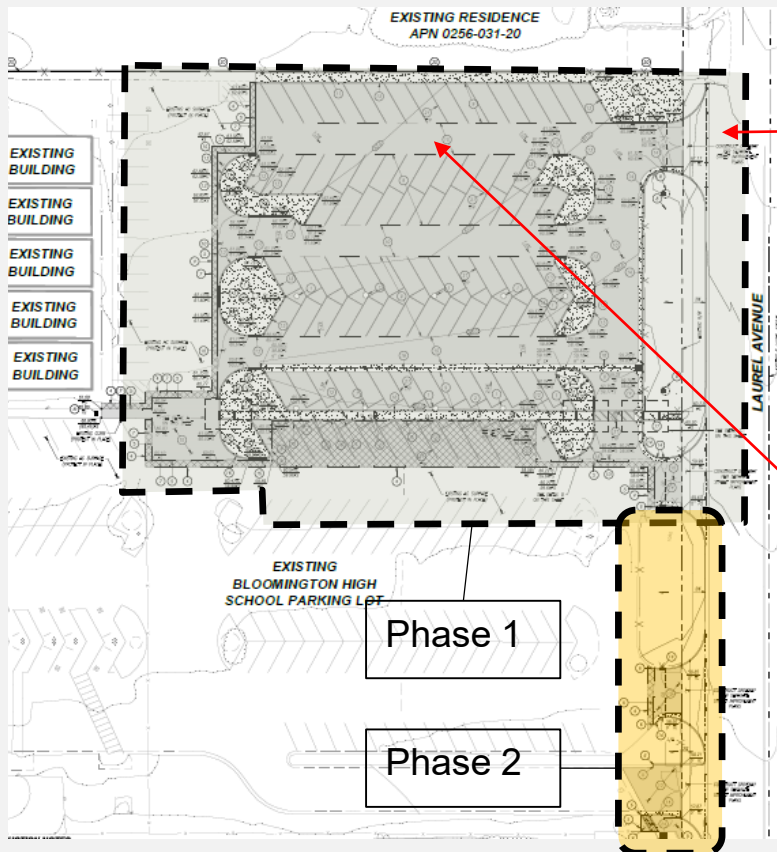
PROJECT UPDATES

Measures B & G



Your Bond Dollars at Work!

❑ Bloomington High School Parking Expansion Project





PROJECT UPDATES



☐ Bloomington High School AV/ Lighting/Rigging Project

- Construction commenced December 6, 2021

☐ Colton High School New MPR Building





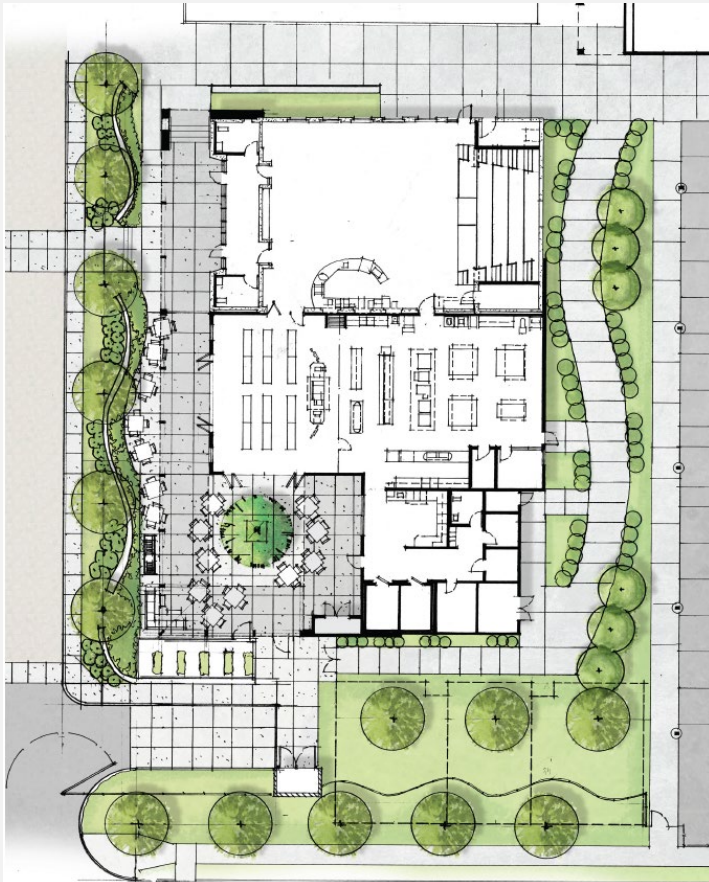
PROJECT UPDATES

Measures B & G



Your Bond Dollars at Work!

❑ Colton High School CTE Culinary Arts Building



Site Plan



Concept Renderings



PROJECT UPDATES

Measures B & G



Your Bond Dollars at Work!

❑ Terrace Hills Middle School Classroom/Admin Addition

- Concept design

❑ Wilson Elementary Classroom Parking Addition

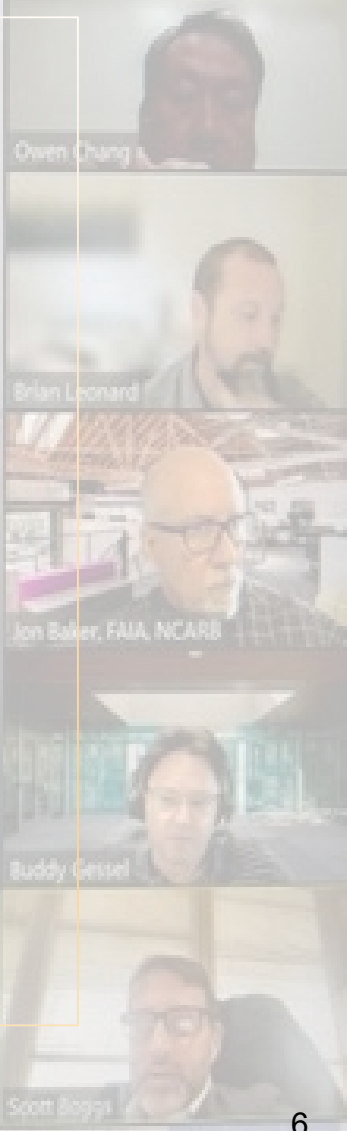
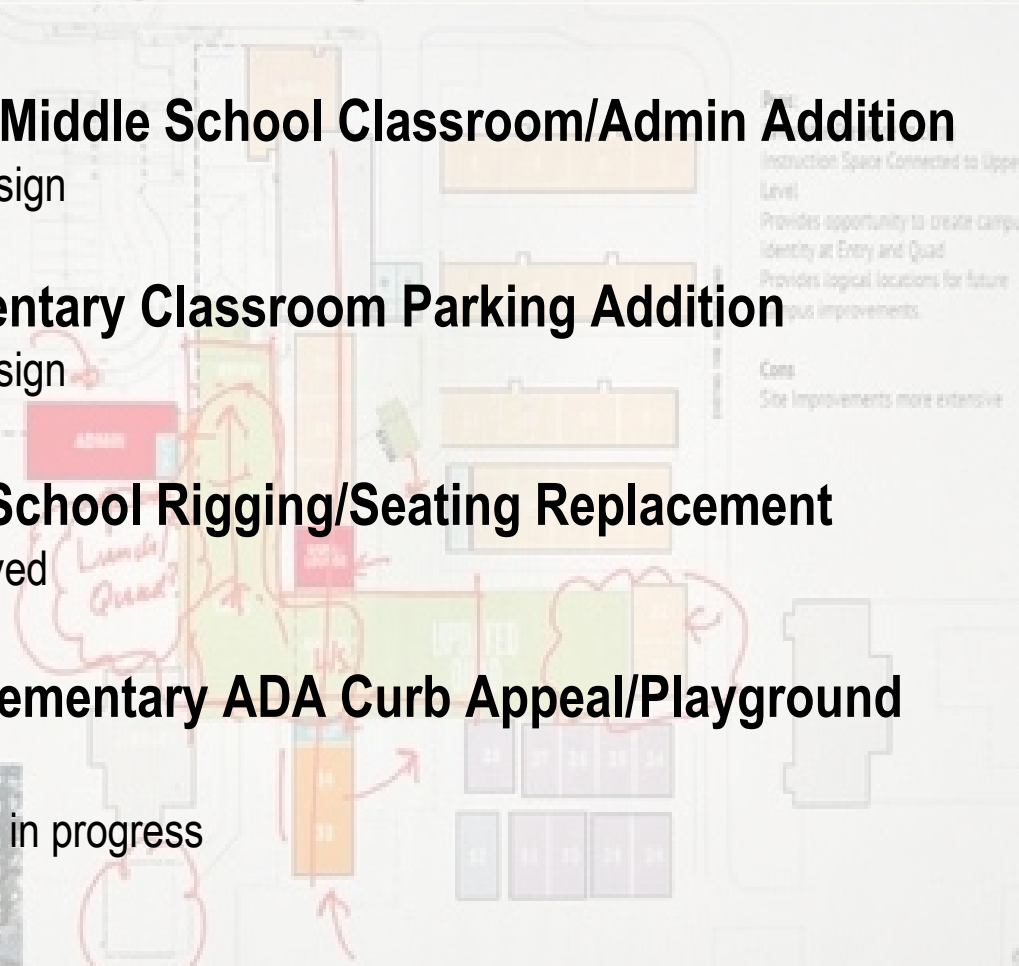
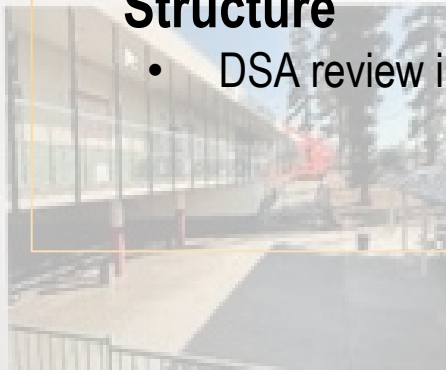
- Concept design

❑ Colton High School Rigging/Seating Replacement

- DSA approved

❑ Crestmore Elementary ADA Curb Appeal/Playground Structure

- DSA review in progress





Thank you!